

CHURCH OF THE REDEEMER

Eblast

January 25, 2024



Our Annual Meeting is **THIS SUNDAY, January 28th**. We'll have a potluck meal following our 11:00 worship service and then our meeting. Featured in the Potluck will be **roast pork** (*first come first serve*). **Mac & Cheese. Please bring a dish to share!** Casseroles, drinks, side dishes, and desserts all welcome. We'll provide paper products and flatware. **We urge you to attend** as we have important matters affecting the life of our parish to discuss.

Baby it's (been) cold outside. And our air handlers for the heating system are not able to distribute the heat from the boilers. The needed part is no longer made, although our Junior Warden is trying hard to find a replacement part that will work. You may wish to keep the temperature in mind and dress in layers when you come to the Church.



COMMUNITY SUPPER IS TODAY!

The Sayre Rotary Club is teaming up with our Community Supper kitchen crew to provide very tasty goulash and warm fellowship from 4:00 p.m. until 6:00 pm. We hope to see you there!

Readings for January 28, 2024

First Reading: Deuteronomy 18:15-20

Psalm 111

Second Reading: 1 Corinthians 8:1-13

Gospel: Mark 1:21-28

Scripture Reflection

Reflection on the Gospel from Feasting on the Word

What is the name of the demon, the spirit, the idolatry you carry? If you can think of this answer as many “troubles,” try to find the root cause, a name to give to that which needs to be cast out. The answer may take different forms throughout the week. You may also consider the same question with regard to your family and to this nation. What is the Holy One casting out today in your presence?



SUPER BOWL SOUP & CHILI SALE

WHAT: Homemade Soup & Chili Sale – *Take out only*

WHEN: February 10, 11, 2024

WHERE: Church of the Redeemer
201 S. Wilbur Ave, Sayre, PA

MENU: Chili
Vegetable Beef Soup
Chicken Noodle Soup
Zuppa Toscana
Gypsy Soup (Vegetarian)

COST: Soup or Chili - \$5.00 pint

PICK UPS: Saturday, February 10th – 5:00 PM to 6:00 PM
Sunday, February 11th – 9:30 AM to 1:00 PM
or by appointment

ORDERS DUE: February 7, 2024

Phone Orders: 570-888-1850 or 570-888-2270 (order forms are available at the church office)
Please make checks payable to the Church of the Redeemer. Proceeds are for the Sunday School events.

For information: 570-888-1850 or 570-888-2270

Order Form

Please circle your selections and the number of pints ordered for your selections.

		Number of pints ordered			Total	Paid
Chili	\$5.00 pint	1	2	3		
Vegetable Beef Soup	\$5.00 pint	1	2	3		
Chicken Noodle Soup	\$5.00 pint	1	2	3		
Zuppa Toscana	\$5.00 pint	1	2	3		
Gypsy Soup (Vegetarian)	\$5.00 pint	1	2	3		
Orders due by 2/7/24						

Name : _____

Phone: _____



Walking the Mourner's Path

St. John Lutheran Church and the Church of the Redeemer (Episcopal) will be offering a new ministry called Walking the Mourner's Path, a Christ-centered grief program. It is a ministry that helps people explore their grief from a spiritual perspective.

The eight-week program will be led by specialty trained facilitators who will help guide the participants to help them find healing and God's love for those who are in grief. Both of your clergy are trained alongside two lay persons.

Working together in a confident and safe environment, individuals will work together. In the workshops, people will acknowledge their pain, see how each journey through grief is unique, have the opportunity to share stories, experience both tears and laughter with the hope to find healing and joy.

The workshops are centered in prayer using a guided workbook that covers one concept a week so that the participants can work on their grief without feeling overwhelmed.

In addition to the trained facilitators, there will be prayer partners assigned to each of the participants. They will pray daily for the person in confidence.

This ministry will be open for members of both parishes along with our neighbors in the Valley. The cost of the program will be \$65.00 to cover the materials. Please do not let the cost be a barrier to participation. Clergy can assist with the cost to ensure no one loses the opportunity for this ministry. If you have questions about the program, please reach out to either Pastor Scott, Pastor Melinda, Jeri Mullen, or Peggy Cranmer, or the Parish Office.

Shrove Tuesday Pancake Supper

On Tuesday, February 13th from 4:30 - 6 p.m. St. John will be holding a pancake supper in preparation for Lent here at the Church of the Redeemer in the Parish Hall. There will be delicious pancakes, eggs and sausage, along with great fellowship. We do hope you will join us then.



Serving in Worship at Redeemer

January 28, 2024

Reader: Margaret Cole

Usher: Walter Chaykosky

Greeter: Linda Murrelle

February 4

Reader: Rose Carpenter

Usher: Bruce Carpenter

Greeter: Phoebe Marshall



Ian Watson 1/25

Terri House 1/25

Betty Nobles 1/26

Barbara Breemen 1/29

Charles Lattimer 2/1

Keith Carpenter 2/3

Debbie Johnson 2/3



St. Mary's meeting . February 6th at 6 p.m. Down memory lane with guest speaker Jim Nobles. More details in coming eBlasts.



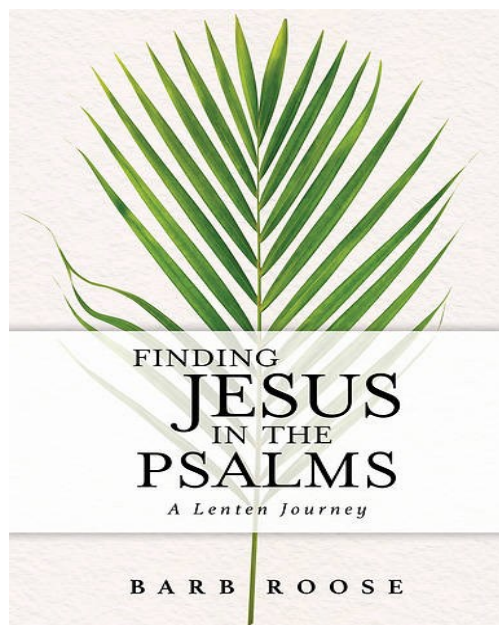
The Wildcat closet is still accepting donation of Sweat pants, Sweat shirts, socks and toiletries. The box is located in the atrium . Linda Murrelle will pick up your donations and make sure they are delivered to the proper locations.

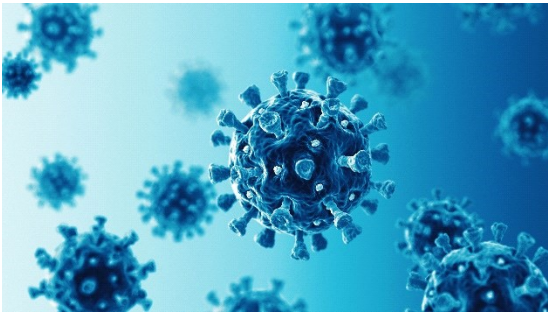
For the Month of **February** we will be collecting cereal for our local food pantries.



Lenten Book Study

On Monday, February 19th at 6:30 p.m. we will begin our Lenten Bible Study “Finding Jesus in the Psalms” (*Location TBD*) the book can be purchased through Cokesbury for \$13.99 or Amazon for 17.99. Amazon offers the book on Kindle for \$9.99 We will be ordering some copies if you will be purchasing your book through us and paying by check please note in the memo line Lenten Book Study Book and \$15 for the total please.





COVID is alive and well ...

Which is bad news for the rest of us. The most current variant is quite contagious, and we have members of our congregation who are afflicted. If you were vaccinated, know that the vaccine protects you from potential hospitalization and death. Unfortunately, it does not protect you from catching the virus in the first place. Here are the CDC's recommendations:

If you've been exposed:

- Any time you are inside and around others, wear a high quality mask (N95, KN 95) for a **full 10 days**. Day 1 is the day AFTER exposure.
- Get tested at least 5 full days after your exposure.

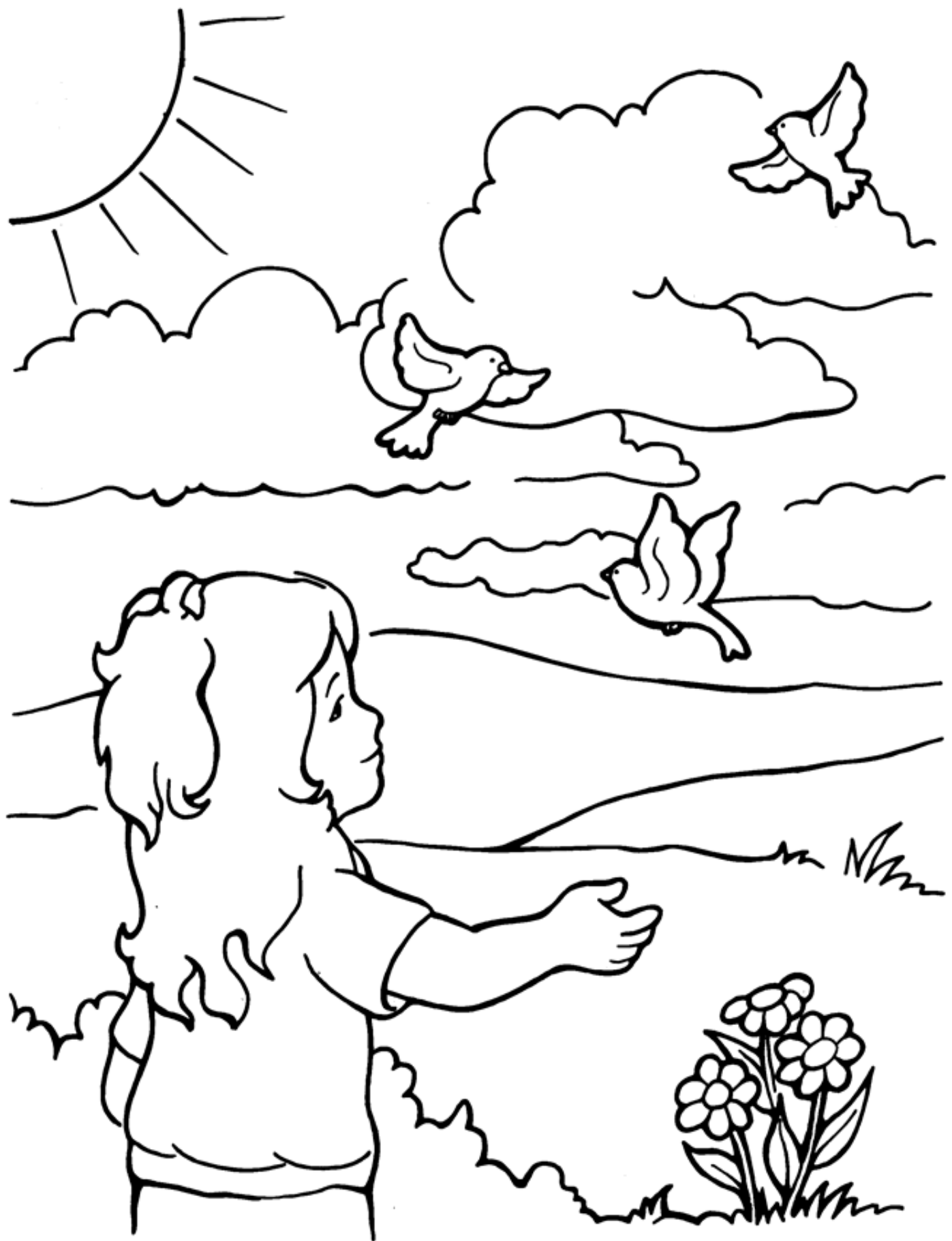
If you are sick:

- And you suspect you might have COVID but do not yet have test results ISOLATE.
- If you have a positive test ISOLATE. (Isolation means stay home and isolate from others in your house.)
- ISOLATION may end if:
 - After 5 days and there are no symptoms
 - With symptoms, isolation may end if you are fever free for 24 hours without the use of fever reducing medications.
- Continue wearing a mask when you are around others for a **full 10 days**.

More information can be found here:

[Isolation and Precautions for People with COVID-19 | CDC](#) or here:

[\(1\) ASL – What to do if you've been exposed to COVID-19 - YouTube](#)



Jesus is more powerful than anything!

Jesus Drives Out an Unclean Spirit

The people were all so amazed that they asked each other, "What is this? A new teaching—and with authority! He even gives orders to evil spirits and they obey him." Mark 1:27



The puzzle is based on Mark 1:21-28 (NIV)

J N D Z J F M M Q R D H Q X G
F L A U T H O R I T Y I G L B
O I Q X J E S U S E C M D C J
B W U X Z Z N C P A P P T D D
E D I R S C B C R C J U D E L
Y F E U W P J I Q H W R I S D
S P T L L T R Z X Z I E O T N
Q H E A I S H E A E C C T R E
K Z O R Q T N Z A R W O Z O O
R I I O A Q U L A D H S D Y T
C P S B K O A M A Z E D E T Z
S K B N U S G F X S E X E Y Y
M A P E O P L E H M A K I Z W
S H N N E W S G O G Z W K Y Z
C R L M U Z G C J U H I L L Y

OBEY
IMPURE
QUIET

SHOOK
SPREAD
COME

SABBATH
DESTROY
JESUS

AUTHORITY
SPIRIT
TEACH

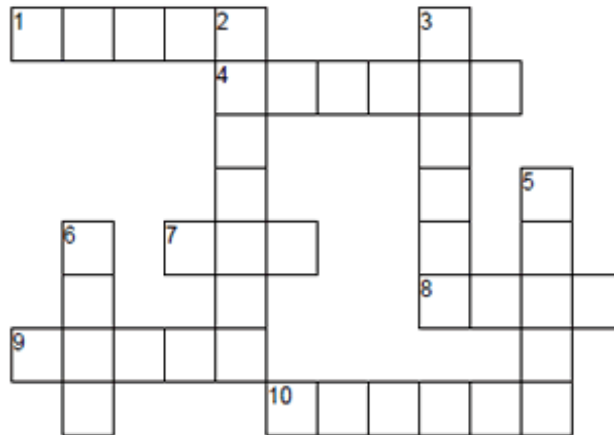
AMAZED
PEOPLE
NEWS

Jesus Drives Out an Unclean Spirit

The people were all so amazed that they asked each other, "What is this? A new teaching—and with authority! He even gives orders to evil spirits and they obey him." Mark 1:27



The puzzle is based on Mark 1:21-28 (NIV)



HORIZONTAL

1. The Son of God
4. To be extremely surprised
7. An adult male human being
8. Immoral, bad, or wicked
9. To instruct or train someone
10. A supernatural being such as a demon

VERTICAL

2. The day of the week set aside by some religions as a day of rest and worship
3. Human beings; men, women and children
5. Making very little or no noise
6. To do what you are told or expected to do

TEACH	PEOPLE	SABBATH	EVIL	QUIET
JESUS	MAN	AMAZED	OBEY	SPIRIT